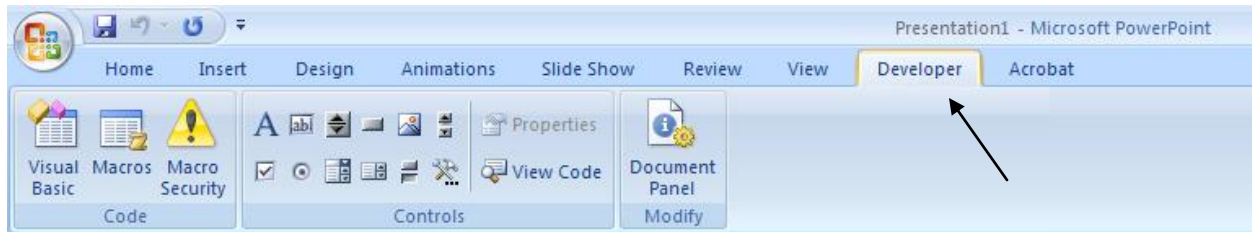
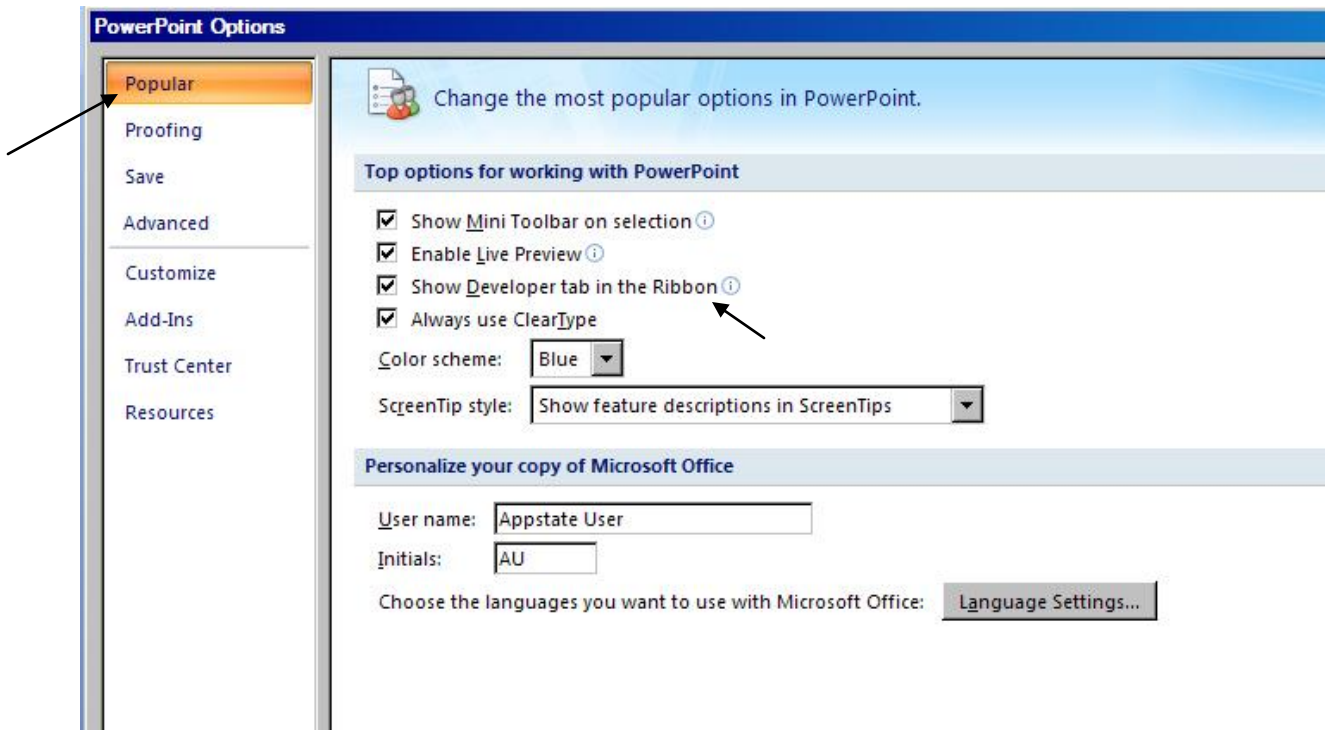


## Insert a YouTube video into a PowerPoint Presentation

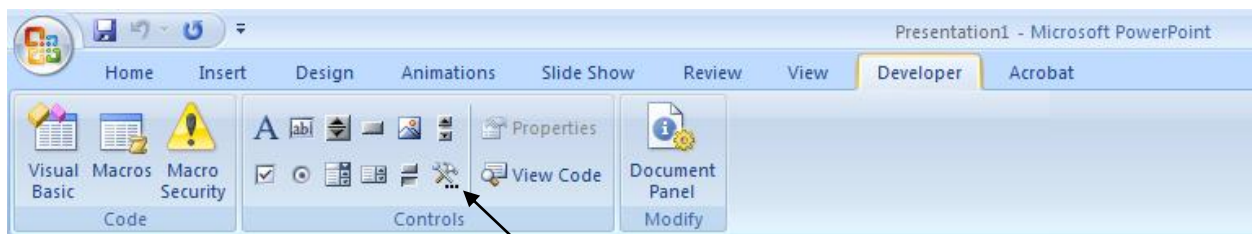
First step is to make sure that you have the **Developer** tab in the ribbon turned on.



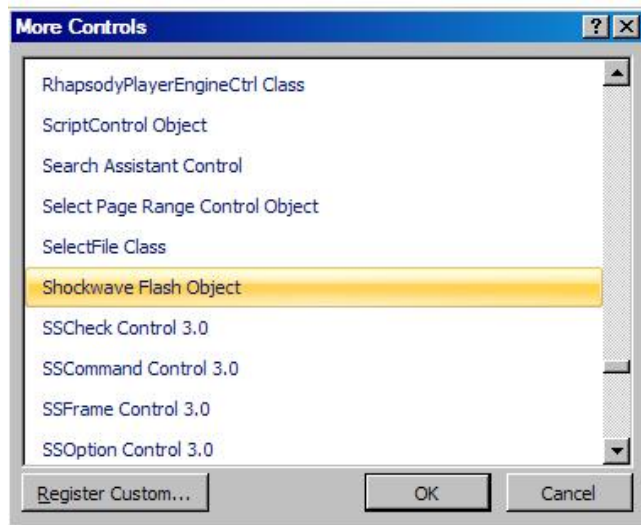
If it's not showing click the Office Button and click on PowerPoint Options. Make sure it is showing Popular options and check the box that says "Show Developer tab in the ribbon".



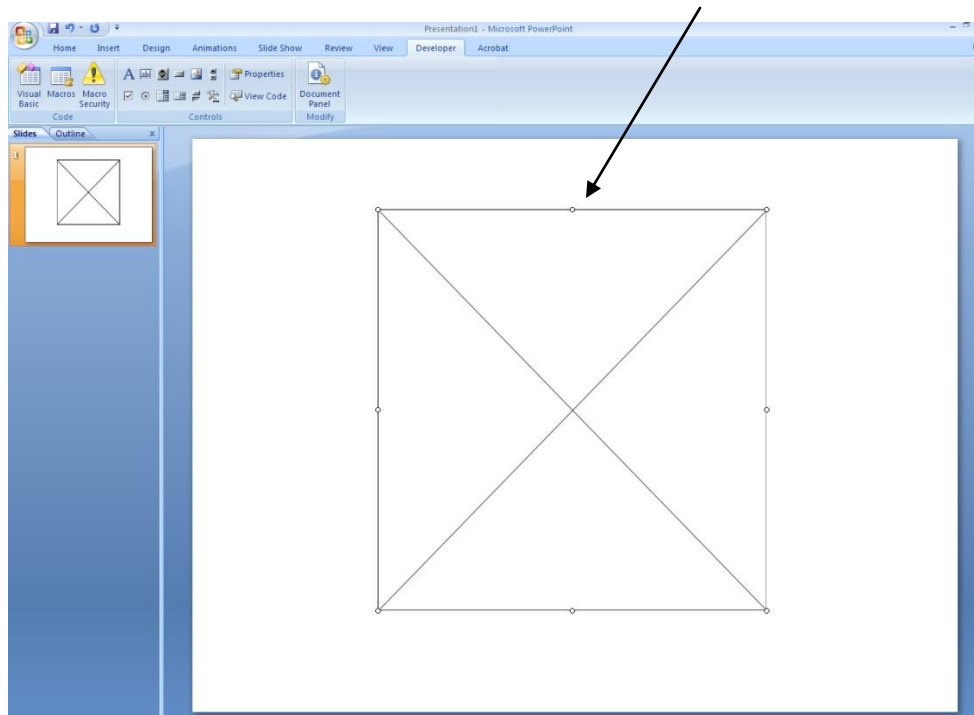
Once you're on the **Developer** tab click on More Controls.



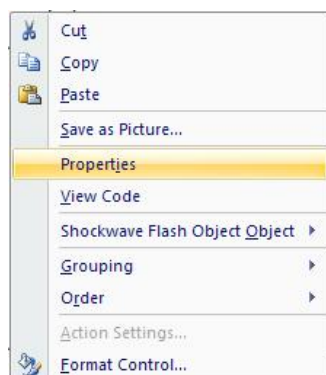
Choose **Shockwave Flash Object** from the list and click OK.



Next, left click and drag the mouse to create your window for the video content.



Right click on the box you created and choose Properties.



On the **Playing** property click the drop down and choose False. Next, paste the URL from your YouTube video into the **Movie** property.

The image shows two windows side-by-side. On the left is the 'Properties' window for a ShockwaveFlash object. The 'Playing' property is circled in red and set to 'False'. The 'Movie' property is also circled in red and contains the text 'http://www.yo'. On the right is a YouTube channel page for 'BelkLib'. The URL 'http://www.youtube.com/watch?v=eg-zySzf' is highlighted in a text box, with an arrow pointing from it to the 'Movie' property in the Properties window.

(Name)	ShockwaveFla:
AlignMode	0
AllowFullScreen	false
AllowNetworking	all
AllowScriptAccess	
BackgroundColor	-1
Base	
BGColor	
DeviceFont	False
EmbedMovie	False
FlashVars	
FrameNum	-1
Height	348
left	174
Loop	True
Menu	True
Movie	http://www.yo
MovieData	
Playing	False
Profile	False
ProfileAddress	
ProfilePort	0
Quality	1
Quality2	High
SAlign	
Scale	ShowAll
ScaleMode	0
SeamlessTabbing	True
SWRemote	
top	108
Visible	True
Width	384
WMode	Window

Now, you have to make a correction to the URL in the Movie property. In this case our original URL is <http://www.youtube.com/watch?v=eg-zySzf588Q>

The corrected URL to play in PowerPoint is:  
<http://www.youtube.com/v/eg-zySzf588Q>

Remove **watch?** and = and add another / forward slash. Once corrected close the Properties windows by clicking the X. That's all there is to it! Watch your slideshow.